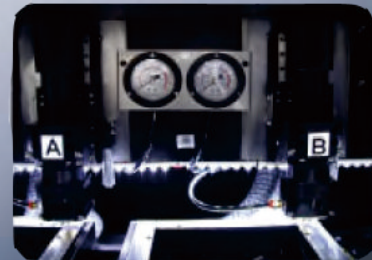


SPH

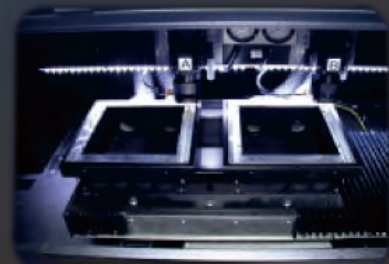
Laser Scribing Machine Working Area : Two 205 x 205mm



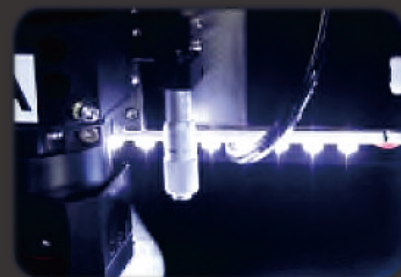
5.7" Color Touch Panel



Two Laser Focus Heads



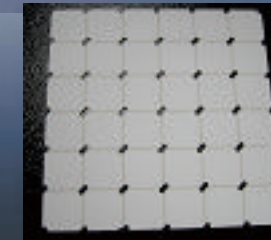
Two Working Tables



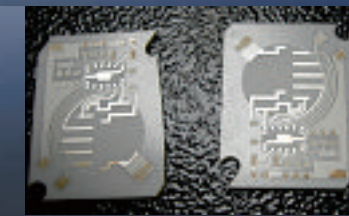
Fine Tuning Focus

Features & Benefits

- 1.CO2 Pulses Laser for fine cutting.
- 2.Red Pinter easy to fix location.
- 3.Focusing red pointer to focus easily.
- 4.Only need two 150W laser systems to get high productivity.
- 5.CLASS I design with protective view windows to see through.



Ceramic Scribing cutting



Ceramic cutting

Specification

Model	SPH-300P
Laser Source	Two 150W Co2 Pulse Laser
Laser Tube Cooler	Water
Net Weight	1600 KGS
Working Area (WxD)	Two 250 x 250mm working Tables
Max Parts Size (WxDxT)	250 x 250mm
Overall Dimension (WxDxH)	1680 x 1280 x 1500mm (66.4" x 50.3" x 59")
Memory Buffer	3MB
Scribing/Cutting Speed	15M/min Scribing, 10M/min Cutting
Main AC Power	1Φ, 110VAC/220VAC, 40Amp, 50/60Hz
Software	EZLASER SCRIBER

Application

1. ITO film cutting
2. Ceramic scribing & cutting
3. IC board scribing and cutting
- 4.
- 5.
- 6.
- 7.
- 8.
- 9.

Option

1. Exhaust Blower 1HP
2. CCD unit

EZLASER

Reference only and will not notice again if any changed.