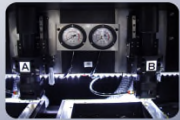


# LSC

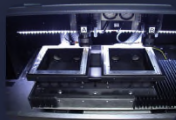
## Laser Scribing Machine - Working Area 250 x 250mm



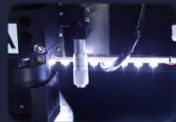
Dual Laser Head



5.7" LCD Touch Panel



Dual Working Tabel



Dependable Adjusting Focus

### Features & Benefits

- 1.5.7" LCD Touch Panel -- Operate & modify parameters more convenient.
- 2.Safety Interlock System -- Prevent unsafe laser emission when any abnormality occurs during operation.
- 3.Focus Module -- Dual laser independable adjusting focus height.
- 4.Control System -- Completely reduplicated at the junction of X/Y axis to reducing the yield loss when breaks stage.
- 5.Movement System -- X/Y axis cross point accuracy :  $\pm 5\mu\text{m}$
- 6.CAM Software (Option) -- EZLASER CAM (Scriber) provides special functions to make excellent product rapidly.
- 7.Scribing Application -- Like thick caramic process, LED substrate, ceramic substrate cutting...etc.



Ceramics Scribing

### Specifications

Model No.	LSC-240P
Laser Source	240 Watt Pulse CO2 Laser
Laser Tube Cooler	Water-cooled
Net Weight	1600Kg
Working Area (WxD)	Dual 250 x 250 mm (9.8" x 9.8")
Max. Part Size (WxD)	Dual 250 x 250 mm (9.8"x 9.8")
Overall Dimension (WxDxH)	1680 x 1280 x 1500 mm (66.4"x 50.3" x 59")
Motion Control	CNC commands (G,M code)
PC Communication	RS-232 serial port with supplied cable
Memory Buffer	3 MB
Standard Focus Lens	1.5"
Max. Speed	Up to 15 M/min scribing, 10 M/min cutting
Laser Power Control	Digital laser power control with automatic proportional pulsing and color linked
Cutting Pallet	Support structure made of aluminum, minimizing damage of the reflecting light
Power Supply	Single phase, 220VAC, 40Amp, 50/60Hz

### Facility Requirements

Host PC	Windows 200 , Xp ,Vista capable system (32 bit)
Air Assist	Gas tank or Compressor to provide dry air, 20Lit/min, 7kg/cm2 with 8mm diameter hose
Exhaust System	Exhaust blower (2HP), Pressure 100 mmAq, Air flow 30m3/min, with two 4" diameter hose

### Options

1.	Compressor
2.	Dry Air Machine
3.	EZLASER CAM (SCRIBER) Software

# EZLASER

Reference catalogue only, if any specification change won't notify again.